

# A Year of Renewal



2022



MINNESOTA COUNCIL  
ON FOUNDATIONS

# A Message

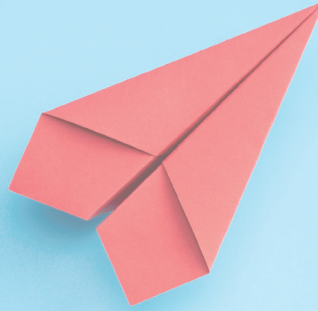
## from MCF President Susie Brown and 2022 MCF Board Chair Katy Friesz



As President and Board Chair, working together to lead the Minnesota Council on Foundations through 2022, we knew it was a year of critical importance in the organization's lifecycle. We navigated through the complex and painful years of 2020 and 2021 toward a moment of organizational renewal. We were ready to engage more deeply with our community and embark on a new plan. It was a turning point.

We gathered together in person, collected critical input from our nonprofit and government partners, developed a new strategic framework, applied the Principles for Philanthropy to our own work, raised funds for collective impact, and made internal changes to ensure that MCF is an excellent workplace. You'll learn more about these efforts in our 2022 Annual Report. We'll never forget the extraordinary challenges of the preceding years and we know our work is not done. We are happy to report that 2022 was our moment to emerge with more clarity, commitment and connections to fuel this community. Thanks for your role in making 2022 a pivotal year for MCF!

# Strategic Framework



The benefits of our year of strategic planning were as much about the process as the outcome itself. We are grateful for significant, thoughtful engagement from MCF members, nonprofits, government and other interested parties invested in our vision of thriving Minnesota communities supported by equitable, effective and principled philanthropy. Thanks to all of those who participated and helped MCF clarify who we are and where we are going. Here are some highlights:

## Toward a Thriving Community

We work with philanthropy so that when philanthropy works with the community, Minnesota thrives.

## We Are MCF

A diverse and inclusive philanthropic community, committed to anti-racism, whose members are adaptable, responsive, and accountable to the community.

## Adapting, Evolving, Engaging, Leading

The world is changing quickly. We are in motion. We are engaging. We lead by example.

## Aspiring Together

Alongside our members, we are guided by the Principles for Philanthropy and aspire to lead by example.

## Delivering Value

Strengthening practice, connecting together and to others, mobilizing voice and resources for impact.

## Connect to Lead

Achieving community impact through maximizing philanthropy's connections.

# Impact/ 2022 Highlights

## DEI

### **Strengthening MCF as an Employer**

We revised employee policies with an equity focus, updated holiday policies to better accommodate religious differences, and developed compensation philosophy and transparent salary bands.

### **Creating Community Among Members**

MCF launched new cohort of participants in the Transforming Philanthropy curriculum, hosted a DEI and People of Color social for MCF members, and partnered with We Are Still Here—MN to bring Native program focus to members.

### **Clarifying Long-Term Commitments**

We made important organizational commitments. We recognize that the Principles for Philanthropy apply to MCF itself, in addition to its members. We are a diverse philanthropic community and that is our power. We advance diversity, equity, inclusion and anti-racism throughout MCF and Minnesota's philanthropic community.

## Public Policy

### **Foundations on the Hill**

MCF staff and members represented Minnesota philanthropy at Foundations on the Hill in the spring, advocating for enhanced charitable giving incentives and sharing about the impact of philanthropy in Minnesota with Minnesota's Congressional delegation.

### **Nonprofit Partnerships**

MCF Partnered with its sector allies in Minnesota to advocate for a Nonprofit Recovery Fund and a thoughtful approach to state grantmaking and nonprofit oversight.

### **Census and Redistricting**

Building on the momentum of the 2020 Census and 2021/22 community-focused redistricting efforts, MCF affirmed its long-term commitment to Census and a more inclusive democracy by creating the Minnesota Census and Democracy Partnership, co-led by Voices for Racial Justice.

# Impact/ 2022 Highlights

## Programs

### **Connecting and Strengthening the Sector**

MCF offered 96 programs attended by over 2,800 participants. Events included member-initiated briefings, educational workshops, meetings of 14 peer networks, and timely learning sessions.

### **Returning to In-Person Activity**

MCF activities included a mix of in-person and virtual programs. For the first time since February 2020, in-person offerings included the MCF Member Summer Social, the CEO Retreat, portions of the 2022 Annual Conference, and other gatherings.

### **Nurturing Trust-Based Practices**

MCF staff, members and nonprofits worked toward a trust-based future of grantmaking. The Common Grant Working Group began efforts to create a more streamlined and modern common grant application.

### **Advancing Local Investments Beyond Grantmaking**

MCF celebrated the five-year milestone of the Minnesota Impact Investing Initiative (MI3). Since its inception, this investment collaboration has grown to over \$110 million in assets and has supported access to affordable housing for over 500 Minnesota families.

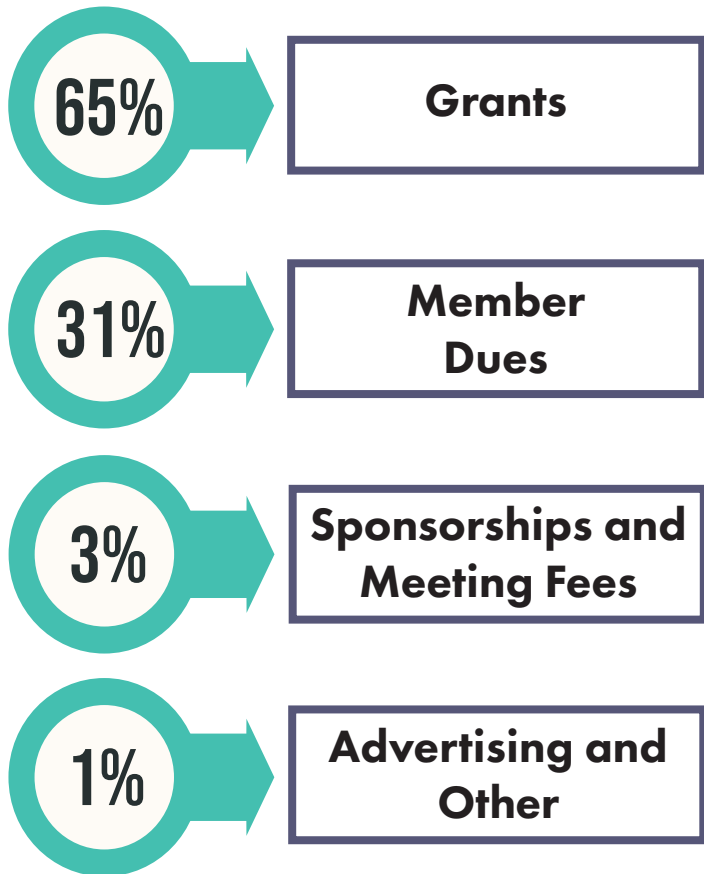
## SERVICE Fund

### **Supporting Equitable Recovery via Intermediary Capacity Enhancements (SERVICE) Fund**

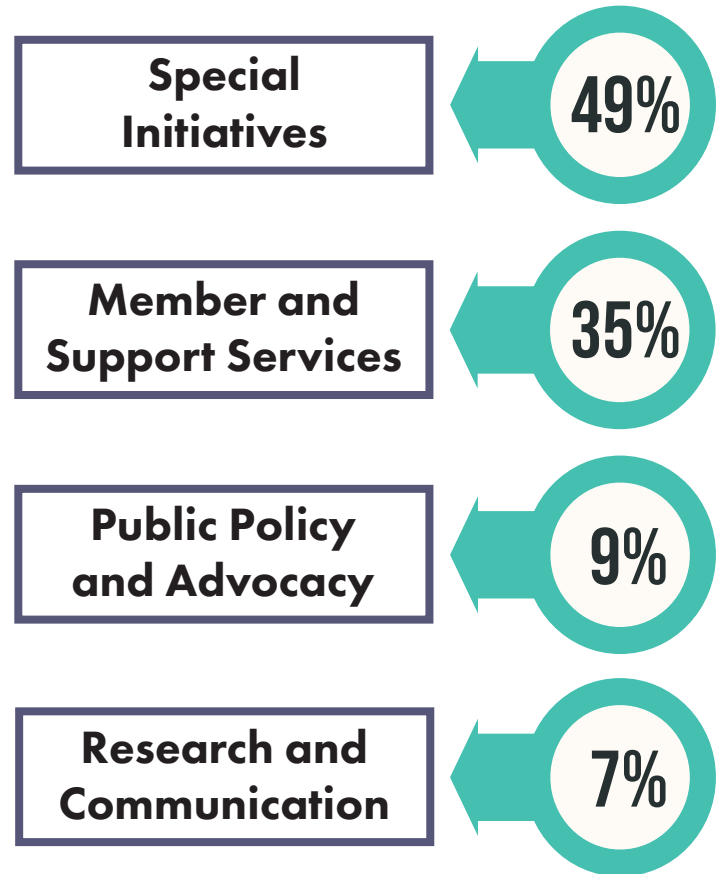
MCF hosted the SERVICE Fund, pooling resources from MCF members and granting more than \$1.5 million to support intermediaries re-granting public funds for COVID relief and recovery efforts.

# 2022 Financial Snapshot

**Revenue**  
**\$3,495,951**



**Expenses**  
**\$3,340,550**



## Membership





MINNESOTA COUNCIL  
ON FOUNDATIONS

## #WeAreMCF

Anti-racism is the active process of identifying and eliminating racism by changing systems, organizational structures, policies and practices and attitudes, so that power is redistributed and shared equitably.

MCF is committed to becoming an anti-racist organization while applying our values of Diversity, Equity and Inclusion, Principles for Philanthropy and working in community to advance prosperity and equity in the state of Minnesota and beyond.

## Contact

800 Washington Ave. N.

Suite 703

Minneapolis, MN 55401

Ph: 612.338.1989

E: [info@mcf.org](mailto:info@mcf.org)

[mcf.org](http://mcf.org)