

# Minnesota Disaster Recovery Fund (MDRF) for coronavirus

## 01 Contribution(s) are Made to the Fund

**Who:** Individuals and philanthropic organizations contribute (give) to the Minnesota Disaster Recovery Fund (MDRF) for coronavirus, after recognizing various needs within the community that arise due to the coronavirus pandemic.

**How philanthropy gives:**

By contacting Susie Brown, MCF President at 612-335-3557 or emailing [sbrown@mcf.org](mailto:sbrown@mcf.org).

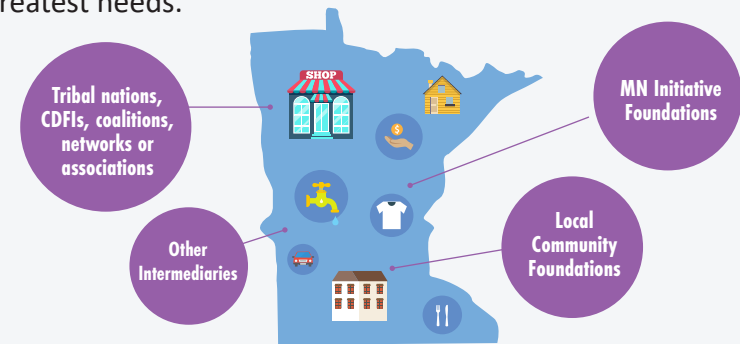
**How individuals give:**

By visiting [GiveMN.org](https://GiveMN.org)



## 02 An Advisory Committee Convenes\*

**Who:** An advisory committee of cross-sector leaders meets to discuss community needs throughout the state. Members recommend where and to whom funds should go based on the greatest needs.



\*Hosted and facilitated by Minnesota Council on Foundations and Saint Paul & Minnesota Foundation

## 03 Funds are Distributed through Grants

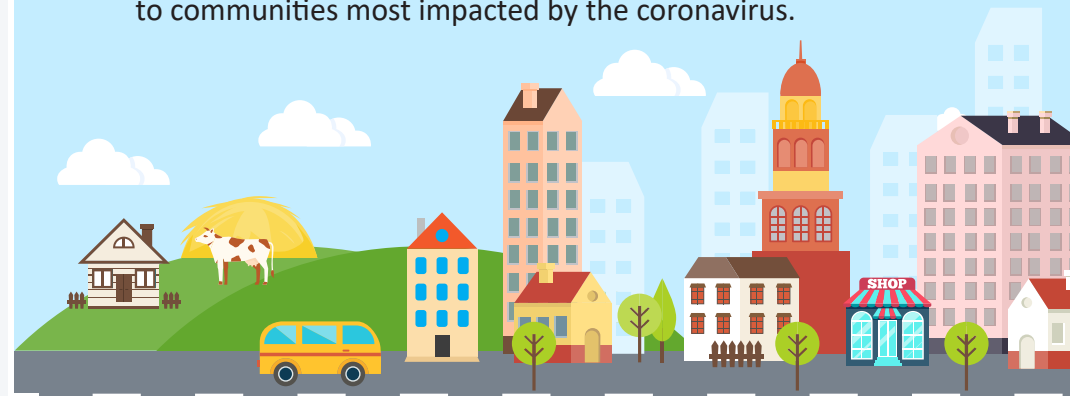
**What:** Funds will go directly to community intermediaries, such as local community foundations, Minnesota Initiative Foundations, tribal nations, CDFIs, coalitions, networks, associations, or other intermediaries that have an existing grant-making process in place.

**Why:** These types of organizations work directly with communities most impacted by the coronavirus and have existing grant-making processes in place.

MDRF's distribution process allows funds to move quickly to Minnesota communities that need it most - supporting both short and long-term needs.

## 04 Minnesota Communities Receive Support

**What:** Next, these intermediary funders will grant, re-grant or disburse funds to individuals, families, nonprofits and/or small businesses\* throughout the state of Minnesota, providing relief to communities most impacted by the coronavirus.



\*Beneficiary entities are not eligible to apply directly to the MDRF fund.